

## Vessel Name: LEE

### Main Particulars

LENGTH OVERALL	265.1 ft	80.8 m
BEAM OVERALL	51.8 ft	15.8 m
DEPTH	19.0 ft	5.8 m
LIGHT DRAFT	14.44 ft	4.40 m
LOADED DRAFT	15.4 ft	4.7 m
DEADWEIGHT	2,541 Lt	2,582 Mt
TONNAGE (ITC) GRT	2,188	
TONNAGE (ITC) NRT	829	

### Cargo Deck

TONNAGE	1,600.3 Lt	1,626.0 Mt
STRENGTH	1,024.1 Lb/ft <sup>2</sup>	5.0 Mt/m <sup>2</sup>
LENGTH	160.8 ft	49.0 m
WIDTH	42.7 ft	13.0 m
CLEAR AREA	6,835.1 ft <sup>2</sup>	635.0 m <sup>2</sup>

### Capacities

FUEL OIL	137,634 USG	521 m <sup>3</sup>	
POTABLE WATER	104,084 USG	394 m <sup>3</sup>	
DRILL WATER	207,375 USG	785 m <sup>3</sup>	
WATER BALLAST	207,375 USG	785 m <sup>3</sup>	
LIQUID MUD	340,782 USG	1,290 m <sup>3</sup>	8,114 BBLs
DRY BULK	7,487 ft <sup>3</sup>	212 m <sup>3</sup>	
BRINE	129,444 USG	490 m <sup>3</sup>	3,082 BBLs

### Discharge Rates

FUEL OIL	26,417 USG/hr.	100 m <sup>3</sup> /hr.
POTABLE WATER	26,417 USG/hr.	100 m <sup>3</sup> /hr.
DRILL WATER	26,417 USG/hr.	100 m <sup>3</sup> /hr.
LIQUID MUD	59,967 USG/hr.	227 m <sup>3</sup> /hr.
DRY BULK (Free Air)	1,497 ft <sup>3</sup> /Min.	42 m <sup>3</sup> /Min.

### Machinery

MAIN ENGINES	Caterpillar 3 x 3516B & 1 x 3516C
MAIN GENERATORS	3 x 1,825 kW, 1 x 2,100 kW, 690 V, 60 Hz, 3 Ø
AUX. GENERATOR	425 kW, 690 V, 60 Hz, 3 Ø
TOTAL INSTALLED POWER	10,728 HP / 8015 kW
EMERGENCY GENERATOR	174 kW, 480 V, 60 Hz, 3 Ø
BOW THRUSTER #1	Brunvoll FU63 CPP, 800HP(600kW), 9 Mt thrust
BOW THRUSTER #2	Brunvoll FU63 CPP, 800HP (600kW), 9 Mt thrust
STERN THRUSTER #1	HRP Conventional, 800HP(600kW), 9 Mt thrust
PROPELLERS	Fixed Pitch Propeller (Conventional) in nozzles
RUDDERS	Twin independent Fish Tail Rudders

### Deck and Anchor Handling

ANCHORS	Rolls Royce 11.5 Mt at 15m/min
CHAIN	2 x 1,846 Kg (439 m x 38 mm Ø chain)
CHAIN CAPACITY	10,594 ft <sup>3</sup> -300 m <sup>3</sup>
WINCH MODEL	Rolls Royce Brattvaag, Electro-Hydraulic
LINE PULL	Two Drum Reverse Waterfall 300 Mt
WINCH CAPACITY DRUM #1	76 mm x 2,000 m, (3" x 6,600') each drum
BRAKE CAPACITY	393 Lt, 400 Mt
STORAGE REEL #1	76 mm x 2,000 m, (3" x 6,600') each drum
TUGGER WINCH #1	11 Mt
TUGGER WINCH #2	11 Mt
STERN ROLLER	SWL 350 Mt (16' x 8')
SHARK JAWS	2 x Karmfork 300 Mt
TOWING PINS	2 Pair x Karmøy hyd w/ locking flaps

### Performance

MAXIMUM SPEED	14.3 Knots
CRUISING SPEED	12.0 Knots
ECONOMICAL SPEED	10.0 Knots
BOLLARD PULL	120 MT

### Fuel Consumption

MAXIMUM	380.7 USG/hr	34.6 m <sup>3</sup> /Day
CRUISING	187.8 USG/hr	17.1 m <sup>3</sup> /Day
ECONOMICAL	97.1 USG/hr	8.8 m <sup>3</sup> /Day

### Accommodation

CABINS	16
BERTHS	38
SINGLE CABINS	2
DOUBLE CABINS	12
4 PERSON CABINS	2
CREW MESS	1
OFFICES	1
CHANGE ROOM	1
SMOKING ROOMS	1
LOUNGES	1
HOSPITAL	1
OPTIONAL PORTABLE ACCOMMODATION UNITS 2X8 PERSON EA.	

### Rescue Capabilities

FRC #1	RESCUE BOAT 6 man - Meeting SOLAS regulations
--------	---

### Electronics & Controls

DYNAMIC POSITIONING	Class 2
DP SYSTEM	Converteam
DP REFERENCE #1	2 x C-NAV 3050(GLONASS)
DP REFERENCE #2	1 x Cyscan
DP REFERENCE #3	Sonardyne Ranger USBL
GYROS	2 x TSS Meridian
ECDIS	Coastal Navigator
RADAR #1	S Band ARPA
RADAR #2	X Band ARPA
GMDSS	Area A3

### Special Equipment

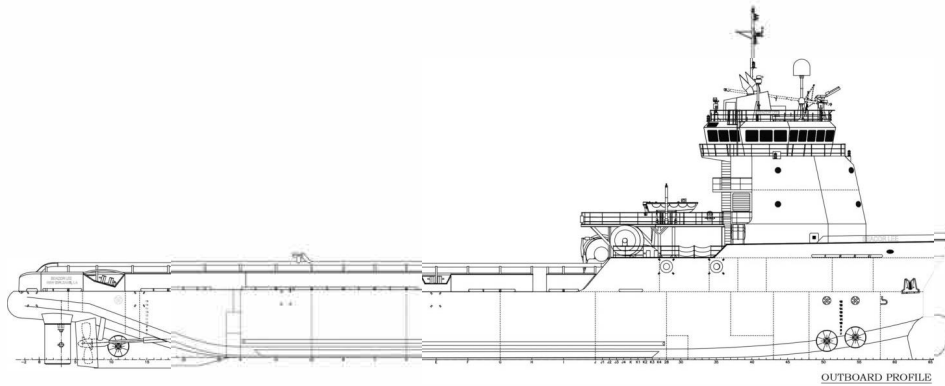
SURVIVAL CRAFT	6 x 25 person inflatable liferafts
MUD TANK CIRCULATION	Flygt Agitators (2) per tank
CRANE #1	Te h rane TC10-24-40 rated at 4,422 kg @ 6.09m and 1,367 kg @ 12.19m
ROV CAPABILITIES	SCHILLING ROBOTICS UHD-111-
ROV POWER SUPPLY	400A, 300A, 60A, 40A AND 30A, 3phase, 480V
CONTAINER SUPPLY	480 V, 63A, 3Ø & 2 x 220 V, 32
STERN A-FRAME	10 T

### Documentation

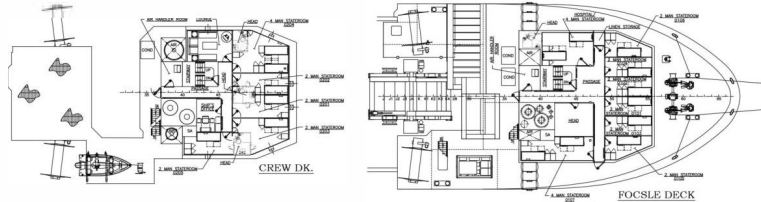
CLASS	ABS *A1, Towing Vessel, Offshore Support Vessel, @, *AMS, *DPS-2, UWILD
CLASS ID	08169576
FLAG	USA
USCG	OSV, SubCh L & I Vessel
OFFICIAL NUMBER	1205367
IMO	9464297
CALL SIGN	WDE4932
MMSI NUMBER	367362000
BUILD YEAR	2008
BUILDER	BENDER SHIPBUILDING
HULL NUMBER	7877



# STABBERT MARITIME GROUP

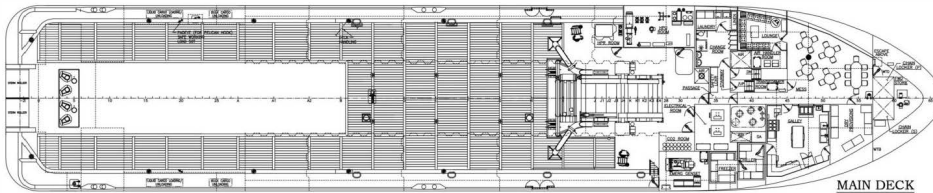


OUTBOARD PROFILE

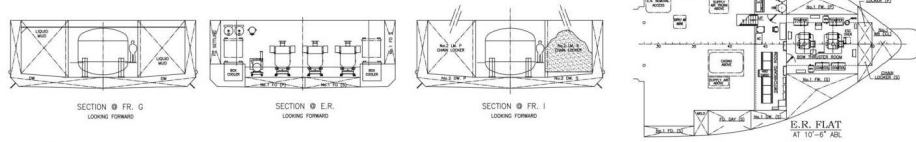


CREW DK.

FOIBLES DECK



MAIN DECK

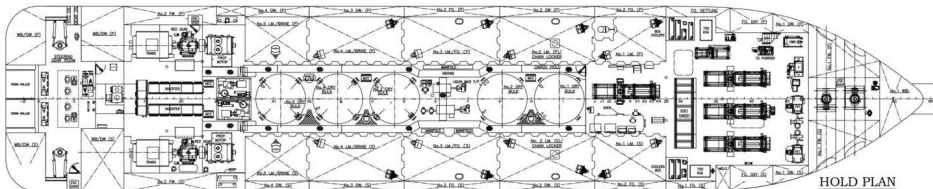


SECTION @ FR. G  
LOOKING FORWARD

SECTION @ FR. E  
LOOKING FORWARD

SECTION @ FR. I  
LOOKING FORWARD

E.R. FLAT  
AT 10'-6" ABL



HOLD PLAN