

SEACOR LEE

Main Particulars

LENGTH OVERALL	265.1 ft	80.8 m
BEAM OVERALL	51.8 ft	15.8 m
DEPTH	19.0 ft	5.8 m
LIGHT DRAFT	14.44 ft	4.40 m
LOADED DRAFT	15.4 ft	4.7 m
DEADWEIGHT	2,541 Lt	2,582 Mt
TONNAGE (ITC) GRT	2,188	
TONNAGE (ITC) NRT	829	

Cargo Deck

TONNAGE	1,600.3 Lt	1,626.0 Mt
STRENGTH	1,024.1 Lb/ft ²	5.0 Mt/m ²
LENGTH	160.8 ft	49.0 m
WIDTH	42.7 ft	13.0 m
CLEAR AREA	6,835.1 ft ²	635.0 m ²

Capacities

FUEL OIL	137,634 USG	521 m ³	
POTABLE WATER	104,084 USG	394 m ³	
DRILL WATER	207,375 USG	785 m ³	
WATER BALLAST	207,375 USG	785 m ³	
LIQUID MUD	340,782 USG	1,290 m ³	8,114 BBLs
DRY BULK	7,487 ft ³	212 m ³	
BRINE	129,444 USG	490 m ³	3,082 BBLs

Discharge Rates

FUEL OIL	26,417 USG/hr.	100 m ³ /hr.
POTABLE WATER	26,417 USG/hr.	100 m ³ /hr.
DRILL WATER	26,417 USG/hr.	100 m ³ /hr.
LIQUID MUD	59,967 USG/hr.	227 m ³ /hr.
DRY BULK (Free Air)	1,497 ft ³ /Min.	42 m ³ /Min.

Machinery

MAIN ENGINES	Caterpillar 3 x 3516B & 1 x 3516C
MAIN GENERATORS	3 x 1,825 kW, 1 x 2,100 kW, 690 V, 60 Hz, 3 Ø
AUX. GENERATOR	425 kW, 690 V, 60 Hz, 3 Ø
TOTAL INSTALLED POWER	10,728 HP / 8015 kW
EMERGENCY GENERATOR	174 kW, 480 V, 60 Hz, 3 Ø
BOW THRUSTER #1	Brunvoll FU63 CPP, 800HP(600kW), 9 Mt thrust
BOW THRUSTER #2	Brunvoll FU63 CPP, 800HP (600kW), 9 Mt thrust
STERN THRUSTER #1	HRP Conventional, 800HP(600kW), 9 Mt thrust
PROPELLERS	Fixed Pitch Propeller (Conventional) in nozzles
RUDDERS	Twin independent Fish Tail Rudders

Deck and Anchor Handling

ANCHORS	Rolls Royce 11.5 Mt at 15m/min
CHAIN	2 x 1,846 Kg (439 m x 38 mm Ø chain)
CHAIN CAPACITY	10,594 ft ³ -300 m ³
WINCH MODEL	Rolls Royce Brattvaag, Electro-Hydraulic
LINE PULL	Two Drum Reverse Waterfall 300 Mt
WINCH CAPACITY DRUM #1	76 mm x 2,000 m, (3" x 6,600') each drum
BRAKE CAPACITY	393 Lt, 400 Mt
STORAGE REEL #1	76 mm x 2,000 m, (3" x 6,600') each drum
TUGGER WINCH #1	11 Mt
TUGGER WINCH #2	11 Mt
STERN ROLLER	SWL 350 Mt (16' x 8')
SHARK JAWS	2 x Karmfork 300 Mt
TOWING PINS	2 Pair x Karmøy hyd w/ locking flaps

Performance

MAXIMUM SPEED	14.3 Knots
CRUISING SPEED	12.0 Knots
ECONOMICAL SPEED	10.0 Knots
BOLLARD PULL	120 MT

Fuel Consumption

MAXIMUM	380.7 USG/hr	34.6 m ³ /Day
CRUISING	187.8 USG/hr	17.1 m ³ /Day
ECONOMICAL	97.1 USG/hr	8.8 m ³ /Day

Accommodation

CABINS	16
BERTHS	38
SINGLE CABINS	2
DOUBLE CABINS	12
4 PERSON CABINS	2
CREW MESS	1
OFFICES	1
CHANGE ROOM	1
SMOKING ROOMS	1
LOUNGES	1
HOSPITAL	1
OPTIONAL PORTABLE ACCOMODATION UNITS 2X8 PERSON EA.	

Rescue Capabilities

FRC #1	RESCUE BOAT 6 man - Meeting SOLAS regulations
--------	---

Electronics & Controls

DYNAMIC POSITIONING	Class 2
DP SYSTEM	Converteam
DP REFERENCE #1	2 x C-NAV 3050(GLONASS)
DP REFERENCE #2	1 x Cyscan
DP REFERENCE #3	Sonardyne Ranger USBL
GYROS	2 x TSS Meridian
ECDIS	Coastal Navigator
RADAR #1	S Band ARPA
RADAR #2	X Band ARPA
GMDSS	Area A3

Special Equipment

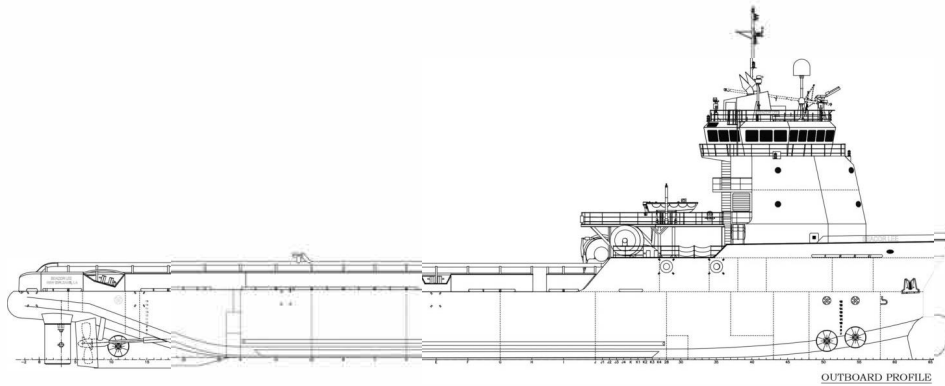
SURVIVAL CRAFT	6 x 25 person inflatable liferafts
MUD TANK CIRCULATION	Flygt Agitators (2) per tank
CRANE #1	Te h rane TC10-24-40 rated at 4,422 kg @ 6.09m and 1,367 kg @ 12.19m
ROV CAPABILITIES	SCHILLING ROBOTICS UHD-111-
ROV POWER SUPPLY	400A, 300A, 60A, 40A AND 30A, 3phase, 480V
CONTAINER SUPPLY	480 V, 63A, 3Ø & 2 x 220 V, 32
STERN A-FRAME	10 T

Documentation

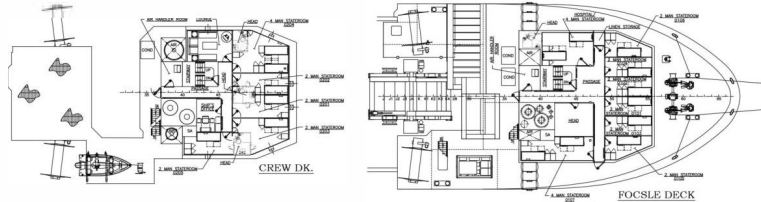
CLASS	ABS *A1, Towing Vessel, Offshore Support Vessel, @, *AMS, *DPS-2, UWILD
CLASS ID	08169576
FLAG	USA
USCG	OSV, SubCh L & I Vessel
OFFICIAL NUMBER	1205367
IMO	9464297
CALL SIGN	WDE4932
MMSI NUMBER	367362000
BUILD YEAR	2008
BUILDER	BENDER SHIPBUILDING
HULL NUMBER	7877



STABBERT MARITIME GROUP

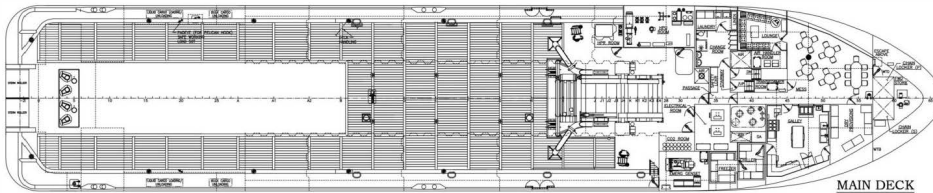


OUTBOARD PROFILE

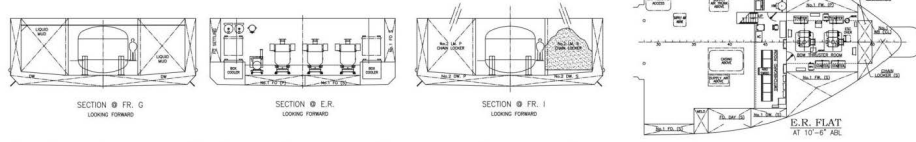


CREW DK.

FOYLE DECK



MAIN DECK

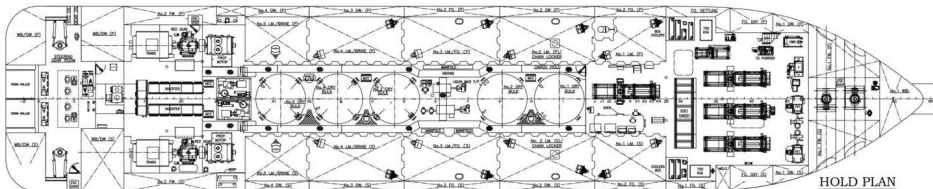


SECTION @ FR. G
LOOKING FORWARD

SECTION @ FR. E
LOOKING FORWARD

SECTION @ FR. I
LOOKING FORWARD

E.R. FLAT
AT 10'-6" ABL



HOLD PLAN