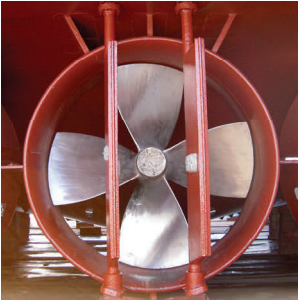




STABBERT MARINE & INDUSTRIAL



STABBERT MARINE & INDUSTRIAL, LLC (SMI) is a full service ship repair facility located in the Ballard neighborhood of Seattle, Washington. SMI is a fresh water port and is situated inside the Hiram M. Chittenden Locks on the Northwest side of the Lake Washington Ship Canal.

SMI's facility is equipped with an 1100 ton dry dock and has 1600ft of pierside moorage, accommodating vessels up to 450ft. With 20,000sqft of covered structure, SMI has the fabrication capacity to meet all of your ship repair needs.

Our in-house trade crafts include:

- Structural steel fitters and welders
- Pipe fitters and welders
- Machinists
- Electricians
- Carpenters – structural and interior
- Painters
- General Laborers



SMI understands the demands of the maritime industry and the importance of on-time project completion and on-time vessel departures. We have a proven track record of on-time delivery and high quality of work. SMI services a variety of sectors within the maritime industry, each of which comes with their own individual challenges and regulations. As a division of the Stabbert Maritime group of companies, SMI is in the unique position of being both a repair facility as well as vessel owners/operators of our own fleet of offshore vessels. This combination provides us with a comprehensive understating of both the repair and operational needs of our clients. Some of the sectors we service are:

- Fishing
- Tug and Barge
- Passenger Vessels
- Hydrographic, Research & Science
- Salvage
- Oil & Gas
- Offshore Construction & Repair
- Government



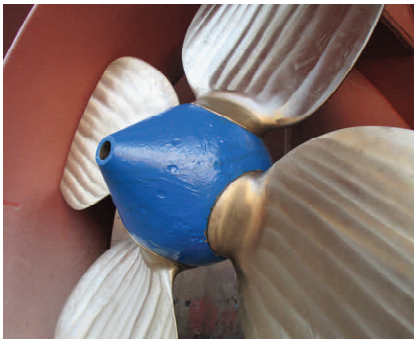
Offsite & Mobile Repairs: SMI has mobile repair teams available to go to your project location as well. Our teams travel locally, nationally & internationally. Regardless of your location, SMI has the skills and resources to come to you.



Certifications:

- U.S Navy approved Quality Management System (QMS)
- NAVSEA approved welding certifications
- ABS approved welding certifications
- DNV approved welding certifications





FACILITIES

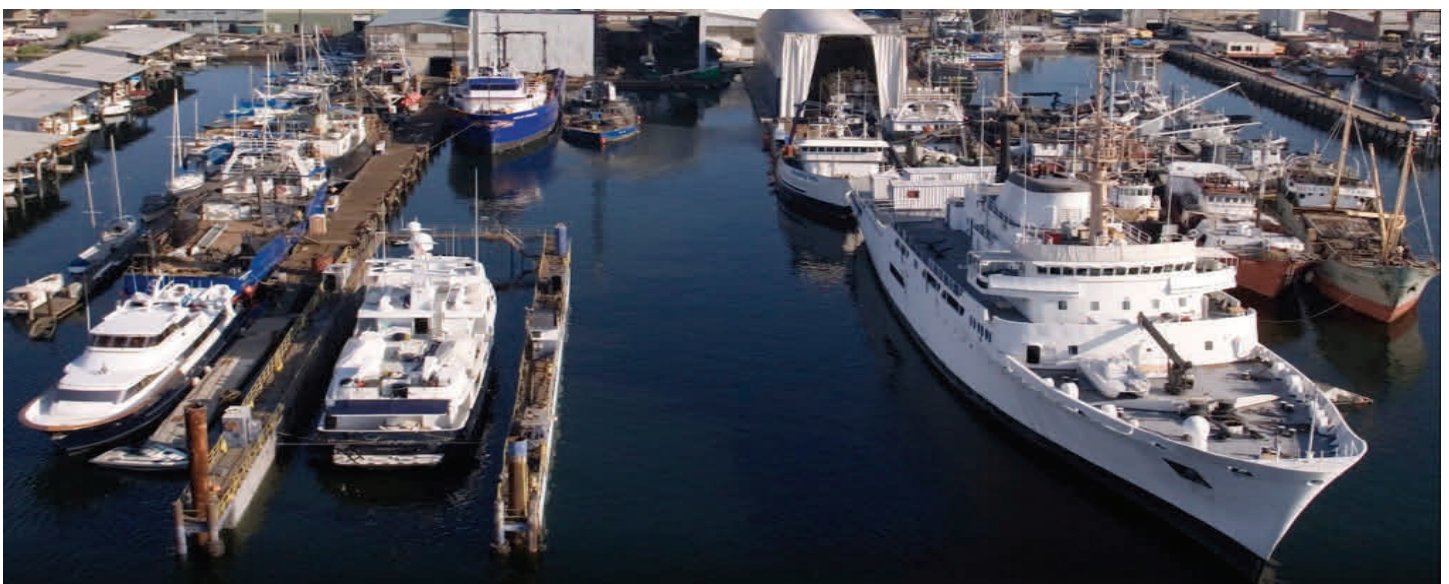
Moorage	1,600' deep water for vessels up to 450 ft.
Office	16,000 ft ² —customer available
Covered Structure	20,000 ft ²
Dry Dock	1,100 ton, 200'
Shop Space	10,000 ft ²
Carpentry Shop	2,000 ft ²

HEAVY EQUIPMENT

Crane	1x50 ton, 1x40 ton, 1x10 ton
Forklift	4
Man Lift	4
Air/Power/Water	Supplied to entire facility

AMENITIES

Security	Automated gate, CCTV, 24 hour watch
Internet	Wi-Fi
Phone	Phone and fax hard line available
Parking	Designated spots available
GPS Coordinates	47 40'01.31 N x 122 23'29.86 W



STABBERT MARINE & INDUSTRIAL—2629 NW 54th Street—Seattle WA—USA
 Office: +1 206 204 4144—www.stabbertmaritime.com—Fax: +1 206 204 4147
 Chris Johnson: +1 206 204 4121—ChrisJ@StabbertMaritime.com
 Joshua Brittain: +1 206 204 4135—JoshuaB@StabbertMaritime.com