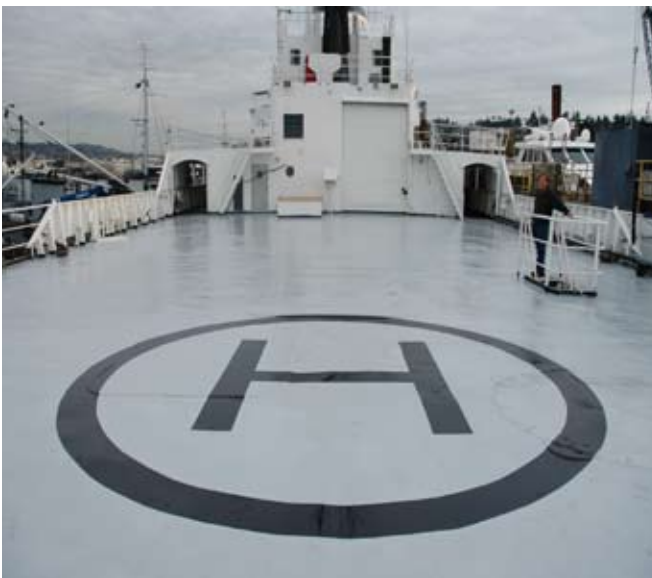


## M/V SAHARA



The M/V Sahara delivers a multi functional dive platform that allows for levels of productivity rarely found in the market. Her 119ft open work deck, 120ft covered work deck, ice class hull and quarters to 175 provide a platform able to meet your most demanding equipment needs. Her diesel electric propulsion system and bow / stern thrusters allow for superior maneuverability while the interior comfort of the vessel is enhanced by a library, multiple crew lounges, and a hospital.





# SPECIFICATIONS

## MAIN CHARACTERISTICS

Type	Displacement
Builder	International Ship Building
Year	1968/ Refit 2006
Construction	Steel
Flag	American
Engines	600v Diesel Electric
Range	25,000 + nm at 14 knots
Classification	ABS proposed
Displacement	3959 tons

## DIMENSIONS

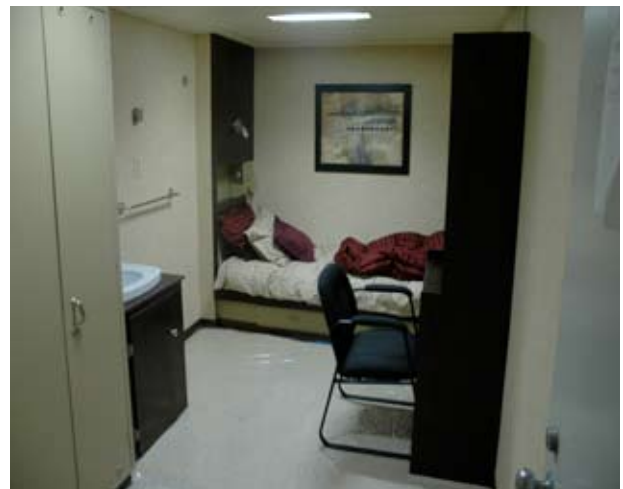
LOA	303'
Beam	52'
Draft (full load)	18'

## CAPACITIES

Accommodations	130/200
Fuel	320,531 USG DOF/MGO
Fresh water	27,000 USG
Lube oil	19 tons
Sewage	6,000 USG

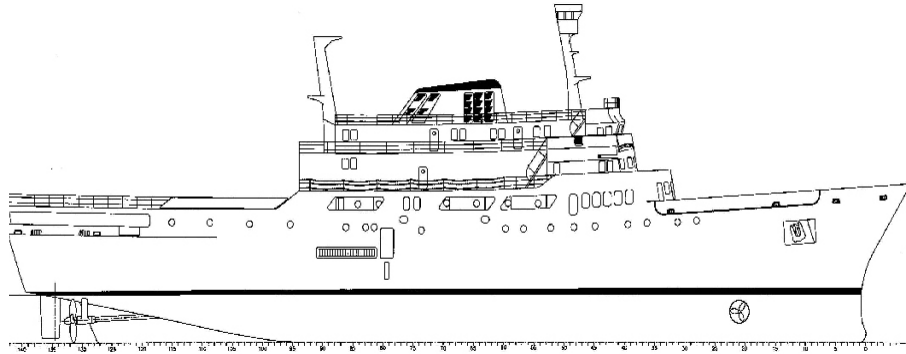
## SPEED

Maximum	16 knots
Cruising	15.5 knots
Economy	12 knots



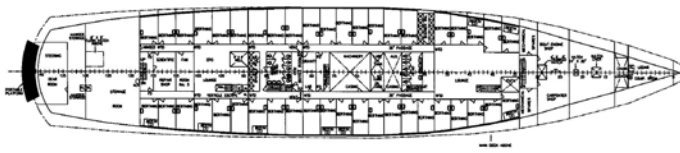


# GENERAL ARRANGEMENT

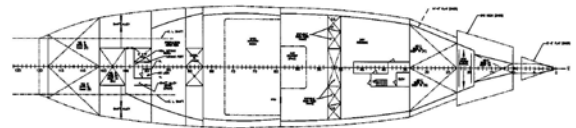


STARBOARD PROFILE

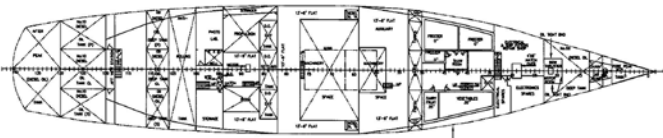
PLAN: 1/1000



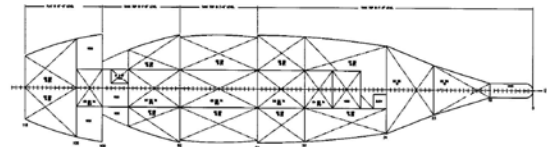
2nd DECK



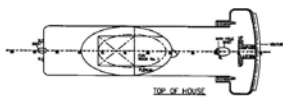
TANK TOP



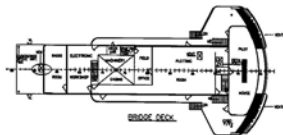
3rd DECK



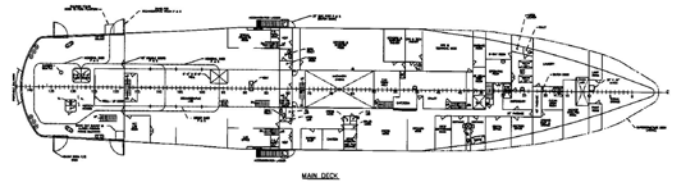
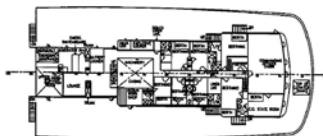
INNER BOTTOM



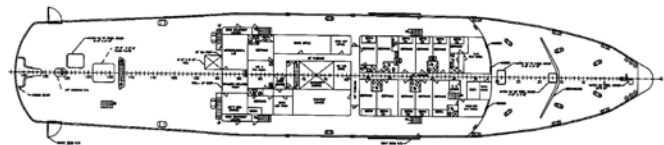
TOP OF HOUSE

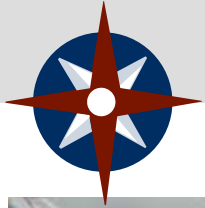


BRIDGE DECK



MAIN DECK





# GENERAL ARRANGEMENT

