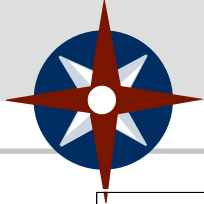




## R/V ALPHA HELIX



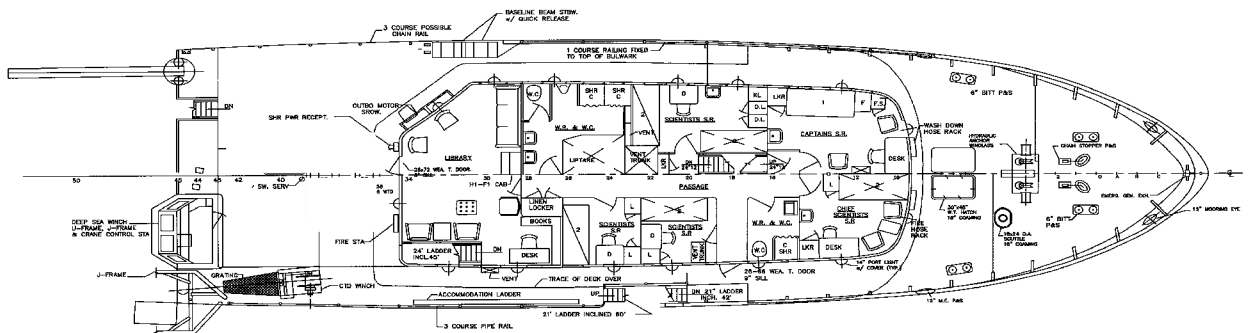
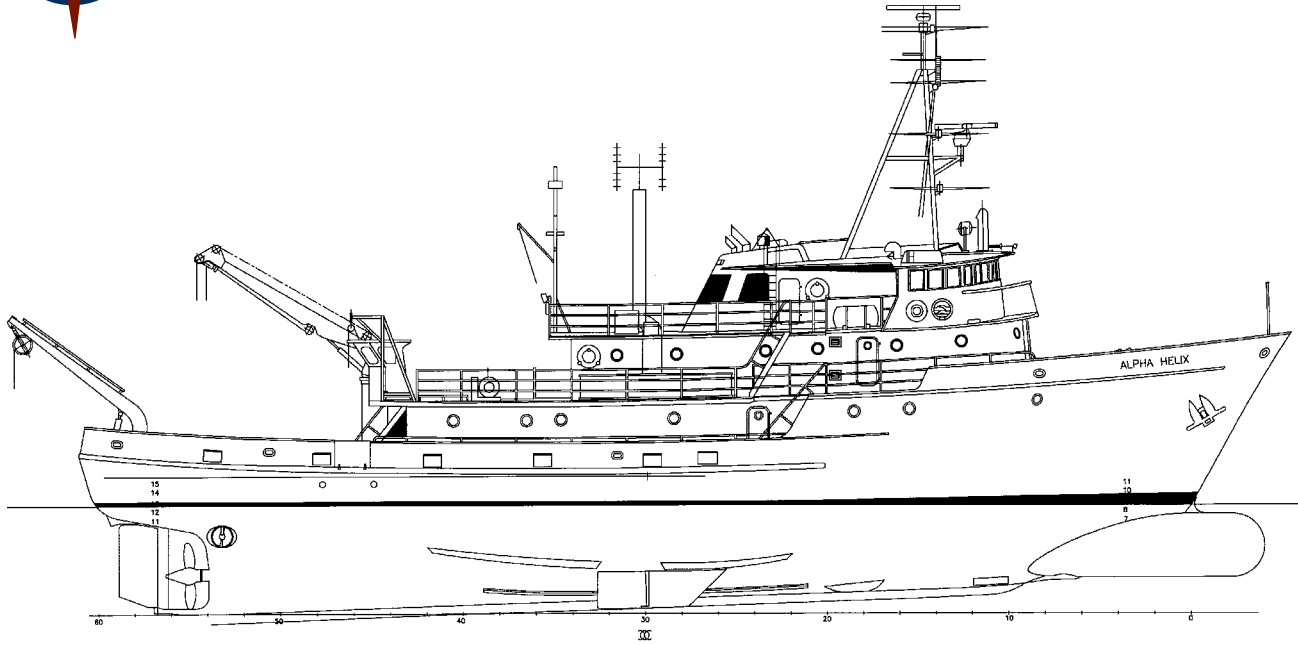


# SPECIFICATIONS

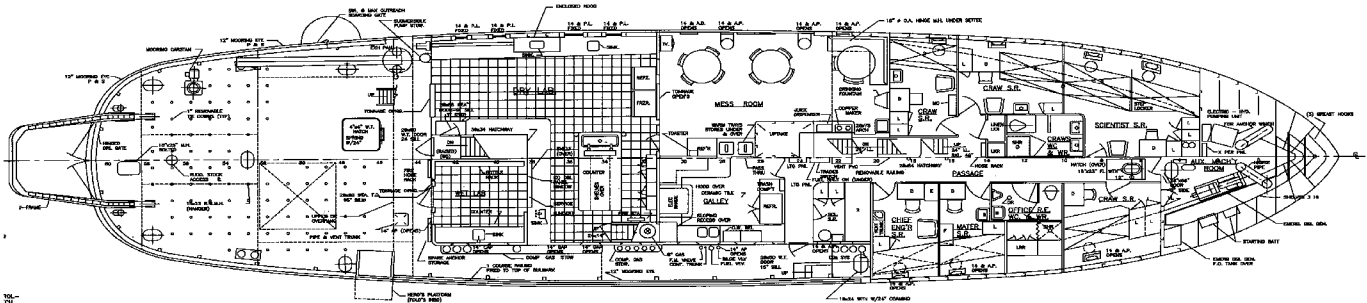
Year Built	1966
Class / Type	Oceanographic Research Vessel
Length	133 ft. LOA (40.53 m)
Breadth	31 ft. (9.44 m)
Depth	14.5 ft. (4.42 m)
Draft Loaded	13.8 ft. (4.20 m)
Main engines	EMD-8-567CR
Total Horsepower	820 @ 800 rpm
Gears	Liaaen ACG50150
Generators	(3) Detroit 8V71
Bow Thruster	Elliot White Gull
Stern Thruster	160 hp
Propulsion	Variable Pitch Props
Range	6500 miles @ 9.5 knots
Fuel Oil	29,250 gallons
Lube Oil	410 gallons
Potable water	5,000 gallons
A frame	3.300 pounds (1497 kg)
Deck crane	S.W.L. 2,880 min 5,310 Max offset to port side (2408.5 kg)
Crew	8-10, depending on mission
Scientists / Supernumeraries	19-21 including marine technician
Tonnage	289 GRT 73 NRT
Labs	Wet: 81 ft2 Dry: 457 ft2
Aft deck	1280 ft2
Cruising speed	10 knots
Max speed	11 knots
Stabilizers	Zero speed stabilization



# GENERAL ARRANGEMENT



PLAN - UPPER DECK  
SCALE 1/4"=1'-0"



PLAN - MAIN DECK  
SCALE 1/4"=1'-0"



# THE SHIP

